

MONTHLY MEMBERSHIP PROGRESS REPORT

LOCATION PHILIPPINES

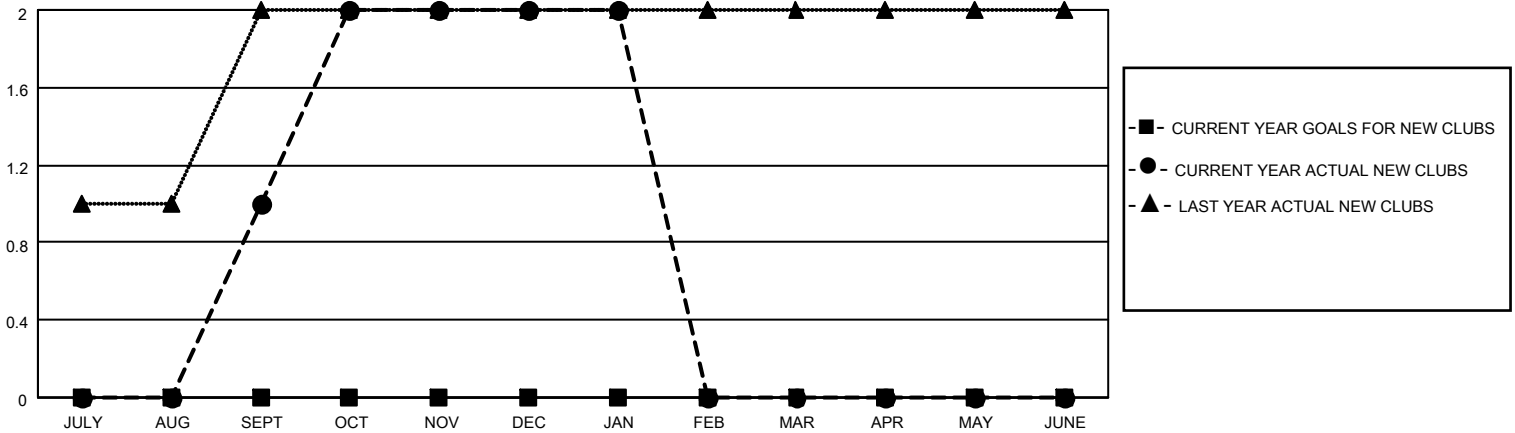
District 301D1

Results as of: 1/31/2023

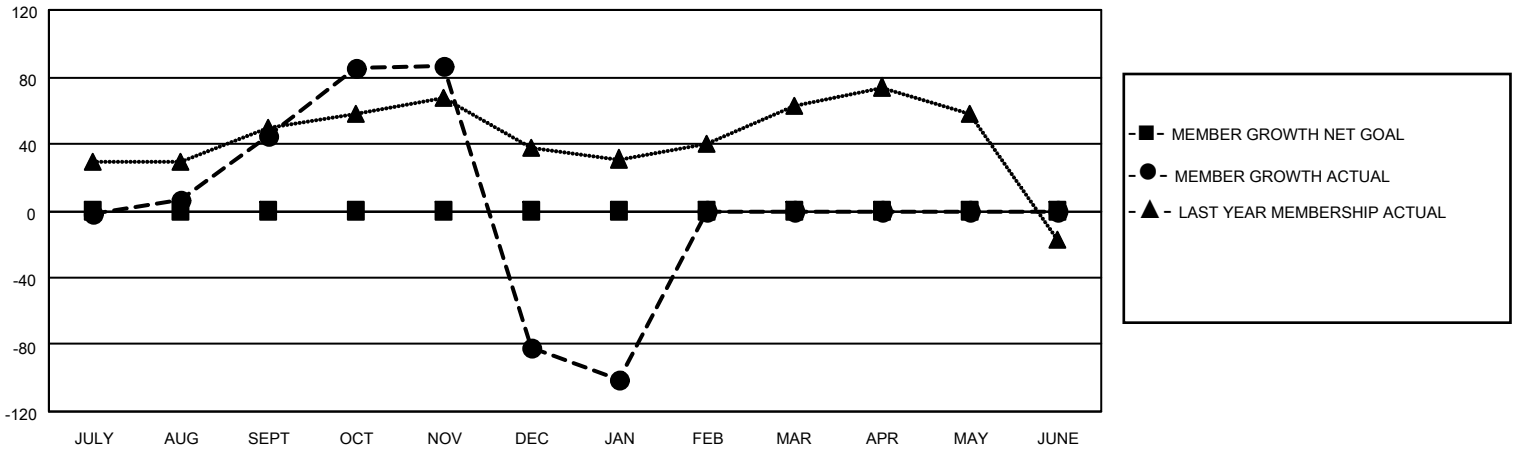
Clubs			
RESULTS FOR 2022-2023			
QUARTER	NEW CLUB GOAL	NEW CLUBS	DROPPED CLUBS
JULY/AUG/SEPT	0	1	1
OCT/NOV/DEC	0	1	1
JAN/FEB/MAR	0	0	1
APR/MAY/JUNE	0	0	0

Members			
RESULTS FOR 2022-2023			
QUARTER	MEMBER GROWTH NET GOAL	MEMBER GROWTH ACTUAL	DROPPED MEMBERS ACTUAL (including transfers)
JULY/AUG/SEPT	0	97	43
OCT/NOV/DEC	0	91	214
JAN/FEB/MAR	0	17	36
APR/MAY/JUNE	0	0	0

GOALS AND ACTUAL NEW CLUBS CUMULATIVE



GOALS AND ACTUAL MEMBERS CUMULATIVE



DROPPED CLUBS: 3

27 CLUBS OF 51 ADDED 1 OR MORE NEW MEMBERS

GENDER DISTRIBUTION

MALE	766 (48.42%)
FEMALE	816 (51.58%)
NON BINARY	0 (0.00%)
PREFER NOT TO ANSWER	0 (0.00%)

DROPPED MEMBERS

[CLICK HERE FOR CUMULATIVE MEMBERSHIP DATA](#)

DECEASED	8
CLUB CANCELLED	165
OTHER	120
TOTAL	293

TOTAL FAMILY UNIT MEMBERS 656

FAMILY MEMBERS PAYING HALF DUES 401